

LEGEND

- | | | |
|----------|----------|------------------------------|
| EXISTING | PROPOSED | |
| —8"SS— | —8"SS— | SANITARY SEWER SEWER LATERAL |
| | | FIRE HYDRANT |
| | | WATER VALVE |
| | | SANITARY SEWER MANHOLE |
| —12"W— | —8"W— | WATER MAIN |
| | | DUAL SERVICE |
| | | SINGLE SERVICE |
| | | 100 WATT STREET LIGHT |
| | | 250 WATT STREET LIGHT |

THE UTILITIES SHOWN ON THIS DRAWING ARE APPROXIMATE. ALL UTILITIES ARE TO BE FIELD VERIFIED BY CONTRACTOR. CONTRACTOR TO NOTIFY ENGINEER OF ANY DISCREPANCIES. THRUST BLOCKS AT ALL BENDS.

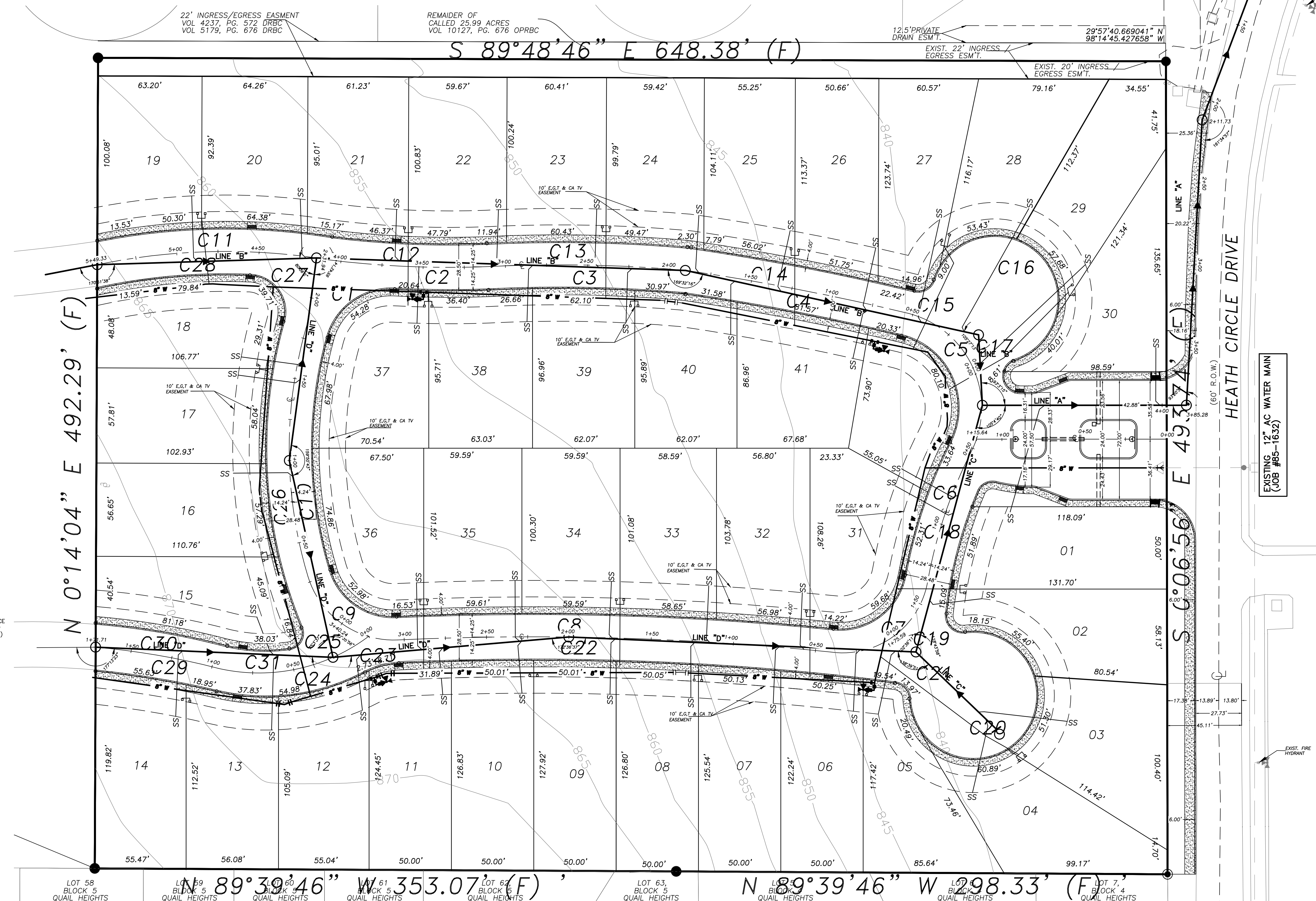
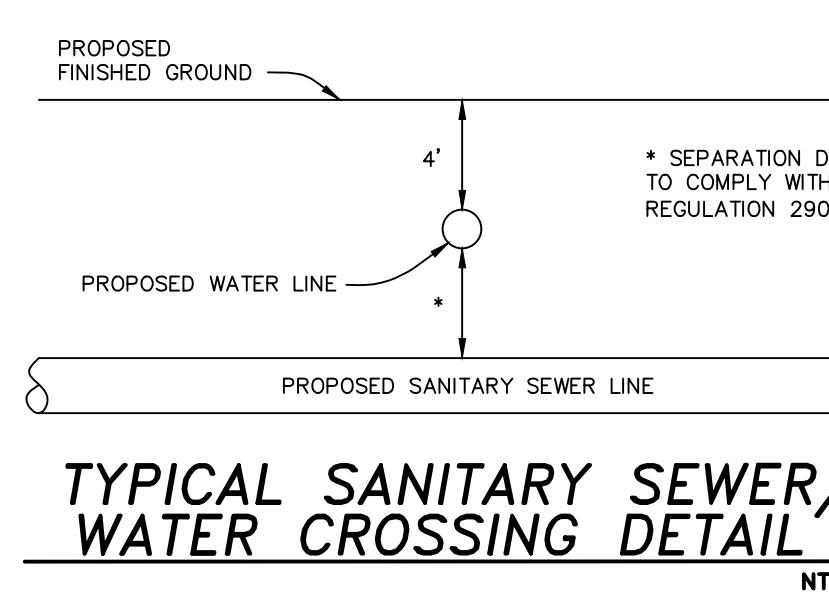
CONTRACTOR is to call Texas One Call TOLL FREE: 1-800-245-4545 prior to any excavation for underground utility location.

APWA STANDARD

Color code for temporary marking of underground facilities:
 RED = Electric powerlines, cables, conduit, and lighting cables
 YELLOW = Gas, oil, steam, petroleum, or gaseous material
 ORANGE = Communication, alarm, or signal lines, cables, or conduit
 BLUE = Potable water
 GREEN = Sewer and drain lines
 PURPLE = Recycled water, irrigation, and slurry
 PINK = Temporary survey markings
 WHITE = Proposed excavation

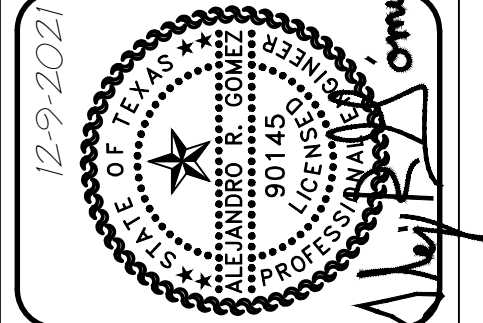
TRENCH EXCAVATION SAFETY PROTECTION

CONTRACTOR AND/OR CONTRACTOR'S INDEPENDENTLY RETAINED EMPLOYEE OR STRUCTURAL DESIGN / GEOTECHNICAL / SAFETY / EQUIPMENT CONSULTANT, IF ANY, SHALL REVIEW THESE PLANS AND AVAILABLE GEOTECHNICAL INFORMATION AND THE ANTICIPATED INSTALLATION SITES) WITHIN THE PROJECT WORK AREA IN ORDER TO IMPLEMENT CONTRACTOR'S TRENCH EXCAVATION SAFETY PROTECTION SYSTEMS, PROGRAMS AND/OR PROCEDURES FOR THE PROJECT DESCRIBED IN THE CONTRACT DOCUMENTS. THE CONTRACTOR'S IMPLEMENTATION OF THESE SYSTEMS, PROGRAMS AND/OR PROCEDURES SHALL PROVIDE FOR ADEQUATE TRENCH EXCAVATION SAFETY PROTECTION THAT COMPLY WITH AS A MINIMUM, OSHA STANDARDS FOR TRENCH EXCAVATIONS. SPECIFICALLY, CONTRACTOR AND/OR CONTRACTOR'S INDEPENDENTLY RETAINED EMPLOYEE OR SAFETY CONSULTANT SHALL IMPLEMENT A TRENCH SAFETY PROGRAM IN ACCORDANCE WITH OSHA STANDARDS GOVERNING THE PRESENCE AND ACTIVITIES OF INDIVIDUALS WORKING IN AND AROUND TRENCH EXCAVATION.



REVISIONS:	DESCRIPTION:
NO. DATE	

GOMEZ-GARCIA & ASSOCIATES, INC.
 19230 STONE OAK PARKWAY, SUITE 302, SAN ANTONIO, TEXAS 78258
 (210) 832-9608 - (210) 832-9615 FAX
 TBE FIRM REGISTRATION #5362



HERON VALLEY II ENCLAVE

UTILITY PLAN

DESIGN	AG
DRAWN	JT
CHECKED	AG
DATE	SEPTEMBER 2022
JOB NO.	390.001
SHEET	?
	OF ?