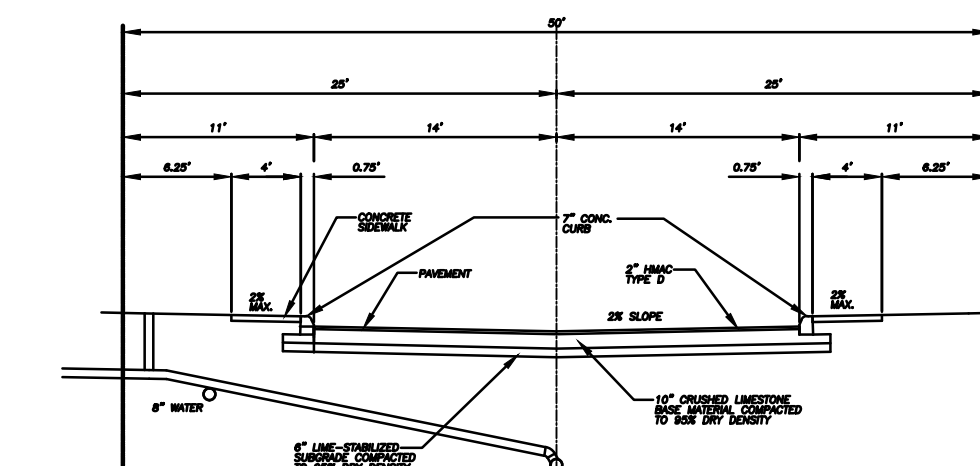
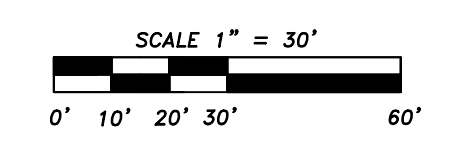


FIRE HYDRANT DETAIL
NOT TO SCALE



TYPICAL STREET CROSS-SECTION MOUNTABLE CURB DETAIL
NOT TO SCALE



PLAT NO. 21-11800447

LOT 1, BLOCK 4
CORAL SPRINGS SUBDIVISION
VOL 9560, PG. 178 PRBC

LEGEND

EXISTING	PROPOSED	DESCRIPTION
---8"SS---	---8"SS---	SANITARY SEWER
	---	SEWER LATERAL
⊗	⊗	FIRE HYDRANT
○	○	WATER VALVE
⊙	⊙	SANITARY SEWER MANHOLE
---	---	12" W
---	---	8" W
---	---	WATER MAIN
---	---	1" WATER SERVICE
---	---	3/4" WATER SERVICE
---	---	1" SERVICE (FIRE)

ALL PIPE TO BE C900 DR18 CL235

THE UTILITIES SHOWN ON THIS DRAWING ARE APPROXIMATE. ALL UTILITIES ARE TO BE FIELD VERIFIED BY CONTRACTOR. CONTRACTOR TO NOTIFY ENGINEER OF ANY DISCREPANCIES. THRUST BLOCKS AT ALL BENDS.

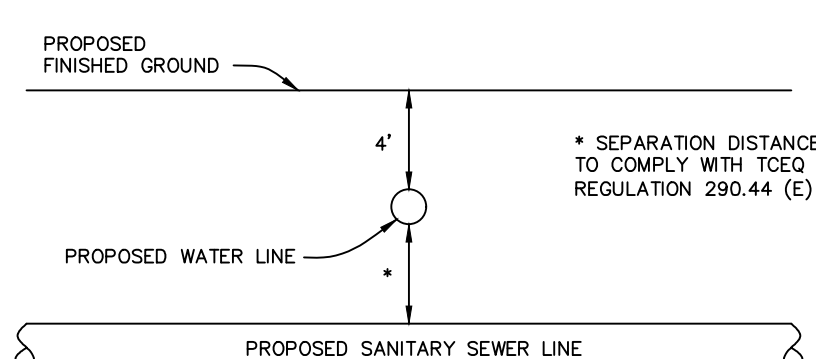
CONTRACTOR is to call Texas One Call TOLL FREE: 1-800-245-4545 prior to any excavation for underground utility location.

APWA STANDARD

Color code for temporary marking of underground facilities:
 RED = Electric powerlines, cables, conduit, and lighting cables
 YELLOW = Gas, oil, steam, petroleum, or gaseous material
 ORANGE = Communication, alarm, or signal lines, cables, or conduit
 BLUE = Potable water
 GREEN = Sewer and drain lines
 PURPLE = Reclaimed water, irrigation, and slurry
 PINK = Temporary survey markings
 WHITE = Proposed excavation

TRENCH EXCAVATION SAFETY PROTECTION

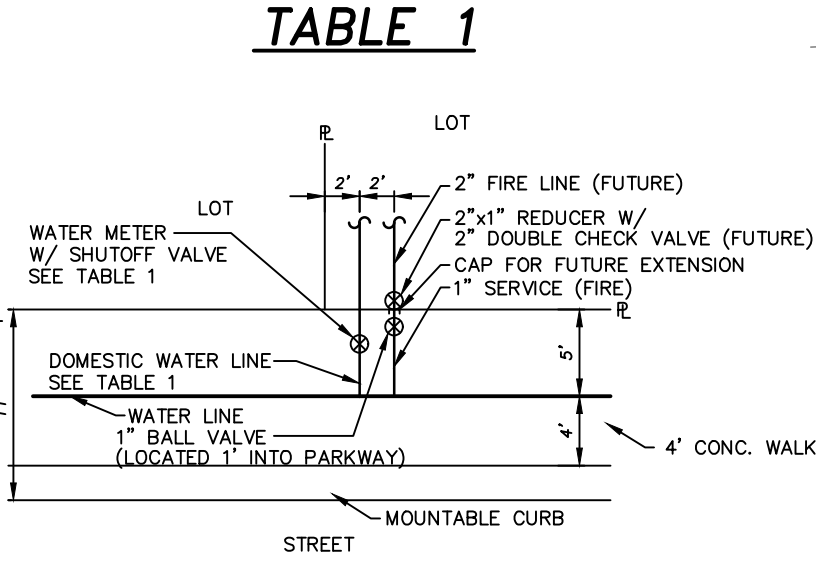
CONTRACTOR AND/OR CONTRACTOR'S INDEPENDENTLY RETAINED EMPLOYEE OR STRUCTURAL DESIGN / GEOTECHNICAL / SAFETY / EQUIPMENT CONSULTANT, IF ANY, SHALL REVIEW THESE PLANS AND AVAILABLE GEOTECHNICAL INFORMATION AND THE ANTICIPATED INSTALLATION SITE(S) WITHIN THE PROJECT WORK AREA IN ORDER TO IMPLEMENT CONTRACTOR'S TRENCH EXCAVATION SAFETY PROTECTION SYSTEMS, PROGRAMS AND/OR PROCEDURES FOR THE PROJECT DESCRIBED IN THE CONTRACT DOCUMENTS. THE CONTRACTOR'S IMPLEMENTATION OF THESE SYSTEMS, PROGRAMS AND/OR PROCEDURES SHALL PROVIDE FOR ADEQUATE TRENCH EXCAVATION SAFETY PROTECTION THAT COMPLY WITH AS A MINIMUM, OSHA STANDARDS FOR TRENCH EXCAVATIONS. SPECIFICALLY, CONTRACTOR AND/OR CONTRACTOR'S INDEPENDENTLY RETAINED EMPLOYEE OR SAFETY CONSULTANT SHALL IMPLEMENT A TRENCH SAFETY PROGRAM IN ACCORDANCE WITH OSHA STANDARDS GOVERNING THE PRESENCE AND ACTIVITIES OF INDIVIDUALS WORKING IN AND AROUND TRENCH EXCAVATION.



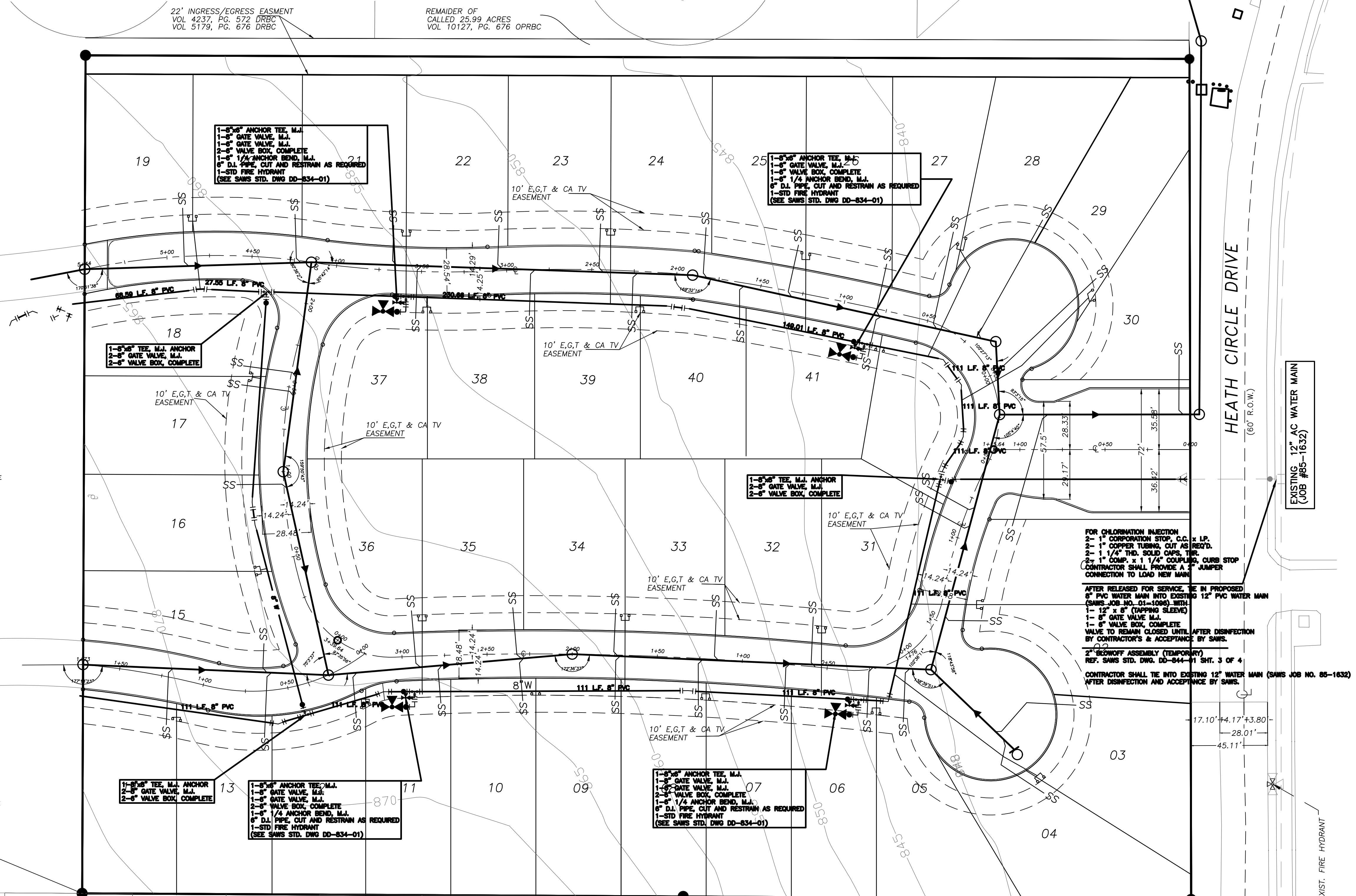
TYPICAL SANITARY SEWER/WATER CROSSING DETAIL
NTS

TABLE 1

	DOMESTIC WATER	WATER SERVICE	WATER METER
DUPEX	3/4"	5/8"	
TRIPLEX/QUADPLEX	1"	1"	



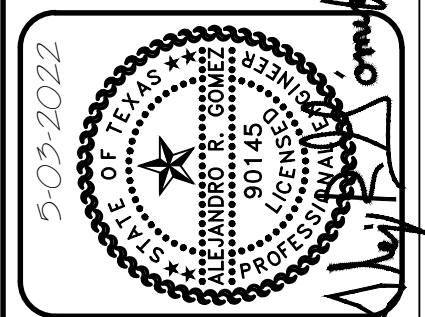
TYPICAL WATER METER DETAIL
NOT TO SCALE



REVISIONS:

NO.	DATE	DESCRIPTION
1	4/26/22	CHANGED DOMESTIC WATER SERVICE FROM 3/4" TO SINGLE 1".
		ADDED 1" NON-METERED FIRE SERVICES TO MF LOTS.

GOMEZ-GARCIA & ASSOCIATES, INC.
 19230 STONE OAK PARKWAY, SUITE 302, SAN ANTONIO, TEXAS 78258
 (210) 832-9608 - (210) 832-9615 FAX
 (T)BE FIRM REGISTRATION #5362



HERON VALLEY
 WATER AREA MAP
 WATER DISTRIBUTION PLAN (1)

DESIGN	AG
DRAWN	JT
CHECKED	AG
DATE	OCTOBER 2021
JOB NO.	378.001
SHEET	50
OF	53

Date: Aug 26, 2022, 6:42pm User: ID: USDR
 File: C:\Users\USDR\Desktop\USA\220807\220825_DWG File of plot 4-24-22 (1) (2) (1).dwg