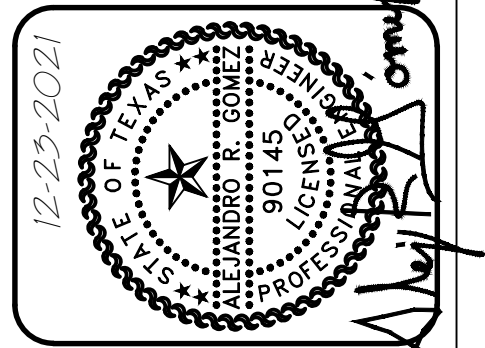


TRENCH EXCAVATION SAFETY PROTECTION

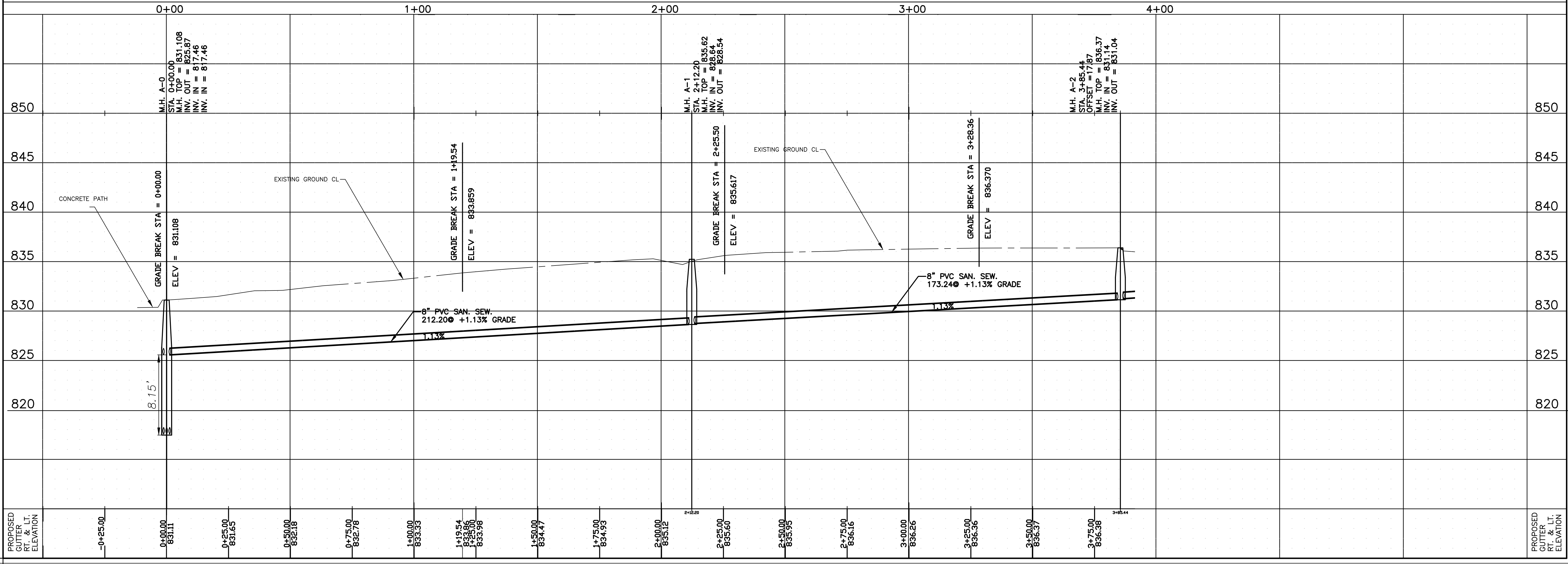
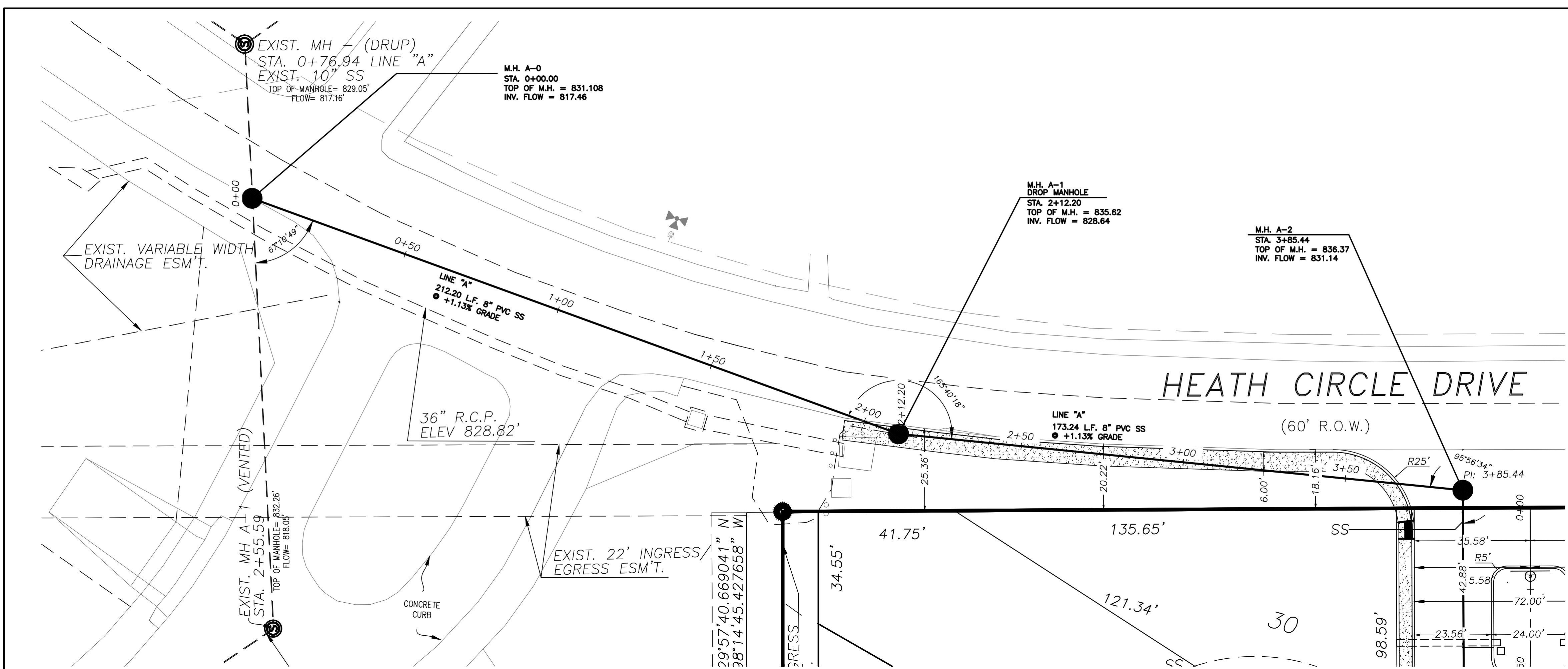
CONTRACTOR AND/OR CONTRACTOR'S INDEPENDENTLY RETAINED EMPLOYEE OR STRUCTURAL DESIGN / GEOTECHNICAL / SAFETY / EQUIPMENT CONSULTANT, IF ANY, SHALL REVIEW THESE PLANS AND AVAILABLE GEOTECHNICAL INFORMATION AND THE ANTICIPATED INSTALLATION SITE(S) WITHIN THE PROJECT WORK AREA IN ORDER TO IMPLEMENT CONTRACTOR'S TRENCH EXCAVATION SAFETY PROTECTION SYSTEMS, PROGRAMS AND/OR PROCEDURES FOR THE PROJECT DESCRIBED IN THE CONTRACT DOCUMENTS. THE CONTRACTOR'S IMPLEMENTATION OF THESE SYSTEMS, PROGRAMS AND/OR PROCEDURES SHALL PROVIDE FOR ADEQUATE TRENCH EXCAVATION SAFETY PROTECTION THAT COMPLY WITH AS A MINIMUM, OSHA STANDARDS FOR TRENCH EXCAVATIONS. SPECIFICALLY, CONTRACTOR AND/OR CONTRACTOR'S INDEPENDENTLY RETAINED EMPLOYEE OR SAFETY CONSULTANT SHALL IMPLEMENT A TRENCH SAFETY PROGRAM IN ACCORDANCE WITH OSHA STANDARDS COVERING THE PRESENCE AND ACTIVITIES OF INDIVIDUALS WORKING IN AND AROUND TRENCH EXCAVATION.

NO.	DATE	DESCRIPTION

GOMEZ-GARCIA & ASSOCIATES, INC.
 19230 STONE OAK PARKWAY, SUITE 302, SAN ANTONIO, TEXAS 78258
 (210) 832-9608 - (210) 832-9615 FAX
 TYPE FIRM REGISTRATION #5362



LINE A EXTERIOR PLAN
 SCALE: 1" = 20'-0"



Date: Jan 06, 2023, 2:58pm, User ID: USER
 File: C:\Users\USER\Desktop\USA PLANS\FINALES\FINAL V.230106.DWG File of plot 4-24-22 (1) (2) (1) DREVALE V-10.dwg

HERON VALLEY II
EXTERIOR
 SANITARY SEWER PLAN AND PROFILE
 LINE "A" STA. 0+00 TO 3+85.44

DESIGN	AG
DRAWN	LT
CHECKED	AG
DATE	SEPTEMBER 2022
JOB NO.	390.001
SHEET	?
OF	?