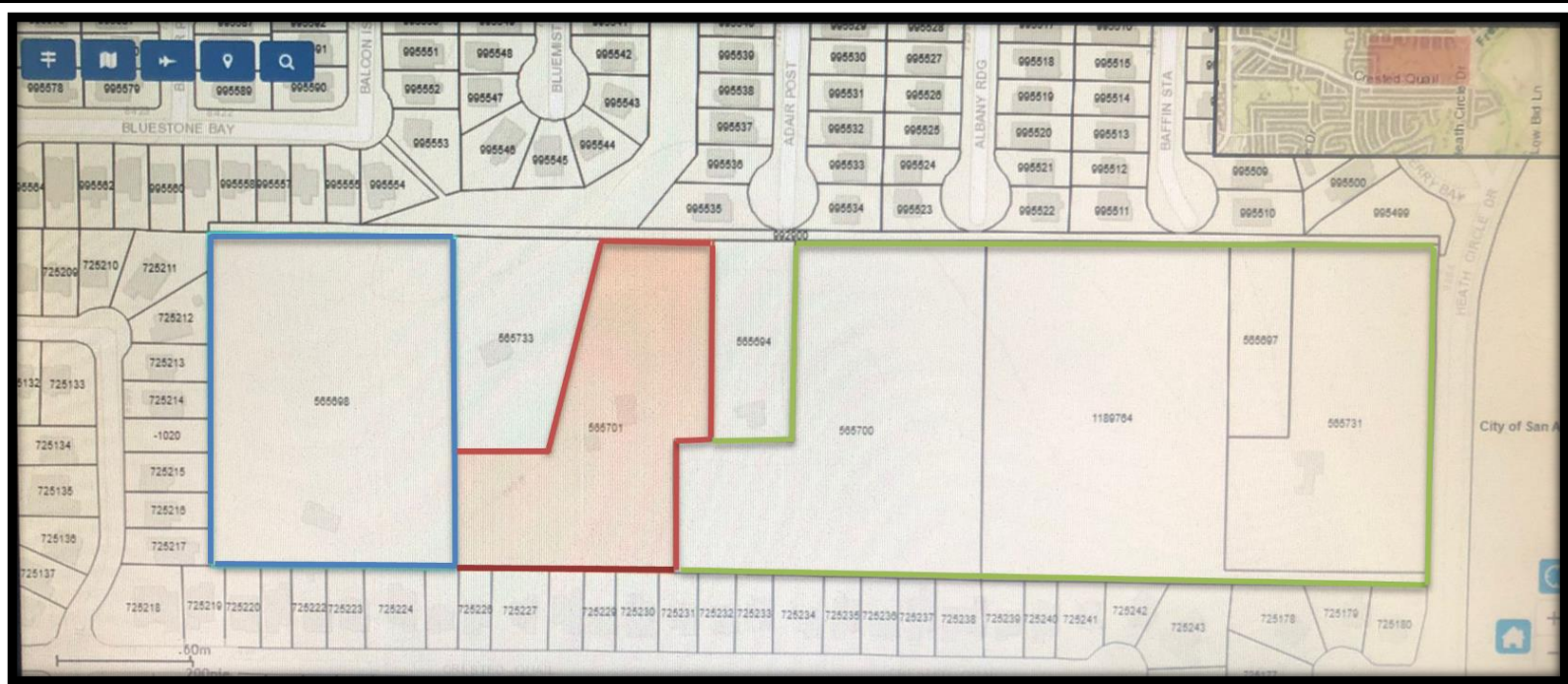


Situacion actual del Proyecto Heron Valley



Terreno actual "Heron Valley"



Terreno Mrs. Maria L. Teague



Terreno Ron Barr

Conseguimos el nombre y direccion de la dueña del terreno del final de la calle Patty Ln. Mrs. Maria L. Teague. Platicamos con ella y nos contacto con su agente de bienes raices, platicamos con la agente y la pusimos en contacto con Yvette Gonzalez nuestra agente de bienes raices. Estan en la negociacion para poner este terreno bajo contrato y poder analizar su situacion.

Tambien pudimos localizer a Mr. Ron Barr quien es el dueño del terreno que colinda con nuestros terrenos y el de Mrs. Teague Maria L.. Tuvimos una entrevista con el y estamos en el proceso, esperando saber si nos vendera el terreno y en cuanto. Si logramos conseguir estos dos terrenos tendiramos toda la franja desde la calle Heath Circle hasta la parte de atras.

Para la aprobacion del Plat ante la ciudad es necesario clausurar definitivamente el pozo de agua que actualmente tiene el terreno #2.

Se contacto a una empresa que se dedica a esto y estan por entregarnos la cotizacion. Se planea empezar con el proceso a mediados de Abril.

El Ing Alejandro Gomez y su equipo siguen avanzando con los tramites necesarios para conseguir los permisos de la ciudad. El avance es satisfactorio, tomando en cuenta que muchas oficinas siguen atendiendo lentamente.

City of San Antonio

Record LAND-PLAT-22-11800386:

Major Plat

Record Status: Under Review

Expiration Date: 06/24/2024

Record Info

Payments

We understand how important customer service is and our employees are here to assist you and to help make your experience with our department a positive one. Go to Record Info / Processing Status to locate the employee(s) currently reviewing your application. Please feel free to reach out to one our team members if you any questions or concerns.

[DSD E-MAIL AND PHONE CONTACT INFORMATION \(PDF\) \(Link to: https://www.sanantonio.gov/DSD/About/Employees\)](https://www.sanantonio.gov/DSD/About/Employees)

Processing Status

- ✔ ▶ Application Intake
- * ▶ Application Completeness

- ✔ ▶ Completeness Review - SAWS
- Completeness Review - Bexar County
- ✔ ▶ Completeness Review - Office of Historic Preservation
- ✔ ▶ Completeness Review - CPS Energy
- ✔ ▶ Completeness Review - Parks and Recreation
- ✔ ▶ Completeness Review - Addressing
- ✔ ▶ Completeness Review - Subdivision
- 🕒 ▶ Completeness Review - TCI - Storm Water
- ✔ ▶ Completeness Review - GIS
- ✔ ▶ Completeness Review - Engineering Street Lights
- ✔ ▶ Completeness Review - Engineering TIA
- ✔ ▶ Completeness Review - Engineering Streets
- ✔ ▶ Completeness Review - Engineering Trees
- Technical Review - SAWS USA
- Technical Review - SAWS Aquifer
- 🕒 ▶ Technical Review - SAWS Water Quality
- 🕒 ▶ Technical Review - SAWS Sewer
- 🕒 ▶ Technical Review - SAWS Water
- Technical Review - Bexar County - Traffic
- Technical Review - Bexar County - General Platting
- Technical Review - Bexar County - OSSF
- Technical Review - Bexar County - SD
- Technical Review - Bexar County - Flood Plain
- ✔ ▶ Technical Review - Office of Historic Preservation
- ▶ Technical Review - CPS Energy
- ✔ ▶ Technical Review - Parks and Recreation
- 🕒 ▶ Technical Review - Addressing
- 🕒 ▶ Technical Review - Subdivision
- ✔ ▶ Habitat Completeness Review
- Technical Review - TCI - Storm Water
- ✔ ▶ Technical Review - GIS
- ✔ ▶ Technical Review - Engineering Street Lights
- ✔ ▶ Technical Review - Engineering TIA
- 🕒 ▶ Technical Review - Engineering Streets
- ✔ ▶ Technical Review - Engineering Trees
- SAWS - Letter of Certification
- Bexar County - Letter of Certification
- ✔ ▶ Office of Historic Preservation - Letter of Certification
- 🕒 ▶ Technical Review - CPS Design

Technical Review - CPS Right of Way
✔ ▶ Parks and Recreation - Letter of Certification
Technical Review - TCI - TIA
CPS Energy - Letter of Certification
DSD - Letter of Certification
Plat Approval Completeness Review
Final Review - CPS Energy
Final Review - Parks and Recreation
Final Review - Office of Historic Preservation
Final Review - SAWS USA
Final Review - SAWS Water Quality
Final Review - SAWS Aquifer
Final Review - SAWS Water
Final Review - Engineering Trees
Final Review - Engineering Streets
Final Review - Engineering TIA
Final Review - GIS
Final Review - Subdivision
Final Review - Addressing
Final Review - SAWS Sewer
Final Review - Bexar County - Traffic
Final Review - Bexar County - General Platting
Final Review - Bexar County - Flood Plain
Final Review - Bexar County - OSSF
Final Review - Bexar County - SD
Final Review - TCI - Storm Water
Final Review - Engineering Street Lights
Planning Commission Meeting
Bexar County Commissioners Court
Hold Review
Plat Recordation
Closure